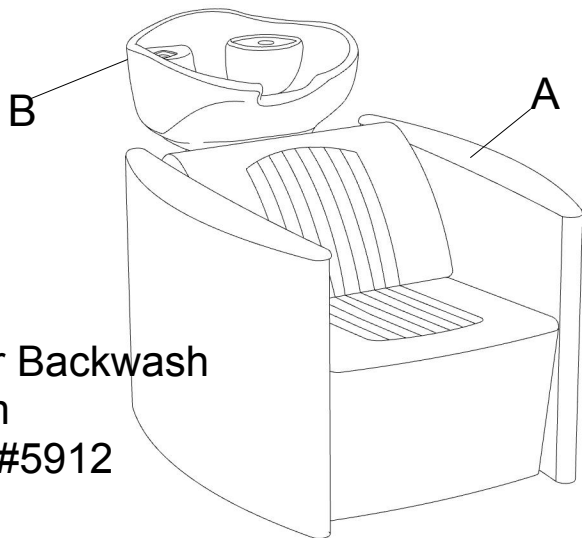




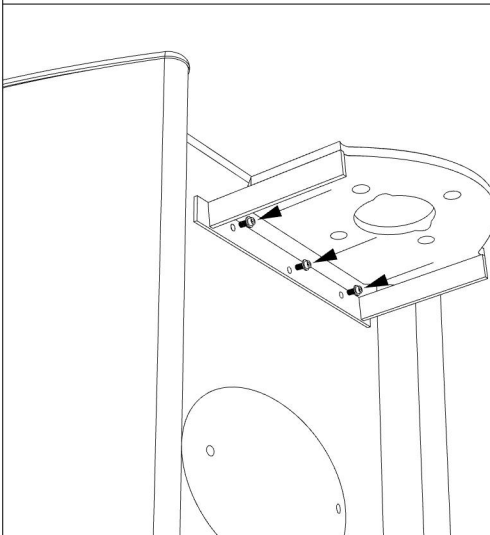
Assembly Instructions

Corsair Backwash
System
Model #5912



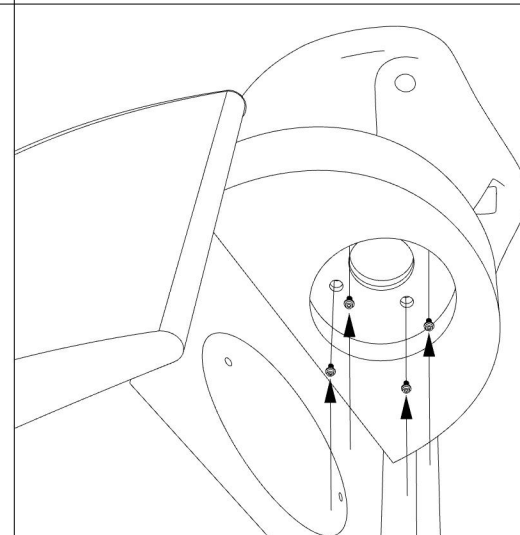
①

Attach metal insert piece (D) to rear of chair using bolt & washer sets (3 total). Tighten with allen wrench to secure.



②

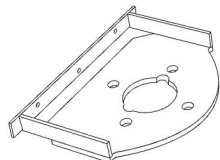
Slide (E) over metal peice (D), line up holes, and secure bowl to each peice using bolt and washer sets (4 total). Tighten with allen wrench to secure.



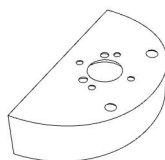
PARTS LIST*

Part	Qty.	Description
A	1	Chair
B	1	Bowl
C	11	Bolt + washer + lock washer

D



E



Open all boxes to check for parts before beginning assembly.

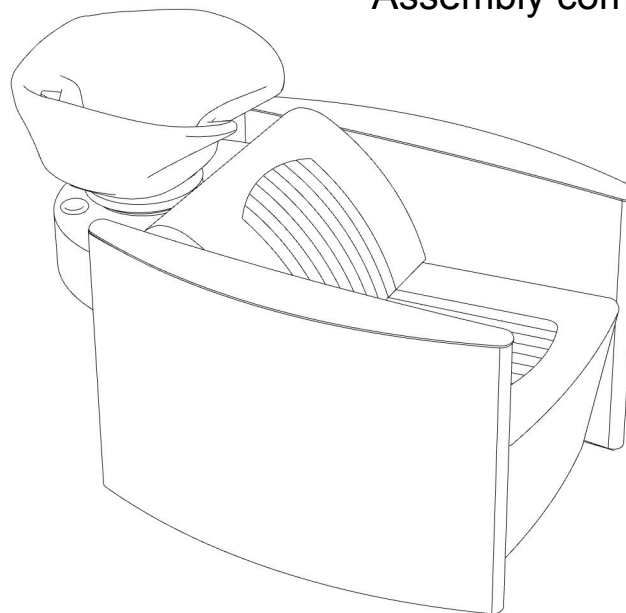
Tools required:

Allen wrench (included)



③

Assembly complete!



Enjoy your new backwash.

If you have any questions or problems during assembly please call our customer service at 1.888.332.0123

Thanks for choosing Minerva!